



TOOLS REQUIRED

- Phillips head screwdriver
- 10mm socket
- T-40 TORX (use Jeeps supplied tool kit)

Allow approximately
1 hour for installation

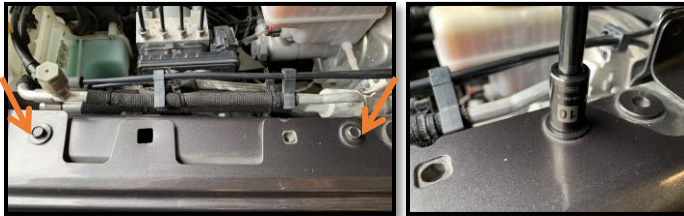
Please refer to the "Get to know your..." pamphlet
for operational instructions

NOTES & WARNINGS

- Never reverse polarity on battery cables.
- Chassis ground the sPOD's negative battery cable.
- Always attach both positive and negative accessory wires to the sPOD's terminals.
- Any modifications to any of the sPOD wire harnesses will void the warranty.
- Although the sPOD system is weather proof, do not submerge in water. Do not spray cleaner onto unit or into any openings. Always use a soft towel or cloth for cleaning purposes and or compressed air to dry.
- System will shut down when voltage drops to 11.6 V (2-minute delay) and requires 12.8 V to reinitialize (start engine).
- Do not tamper, open or remove any factory-installed components; this will void the warranty.
- Do not replace 2amp fuse with any other rated fuse; this will void the warranty.
- Do not attach any additional electrical accessories to the battery terminals on the BantamX/SourceLT; this will void the warranty.
- The BantamX/SourceLT does not require the use of relays or fuses unless the accessory attached draws more than 30amps
- The BantamX/SourceLT employs self healing circuits. In the event of a short/overload, the circuit will shut off. Correct the short/overload, then cycle the switch on and off to reset.

INSTALLATION PROCEDURE

- On driver side fender, locate and remove the two factor fender bolts using a 10mm socket (set bolts aside for later).

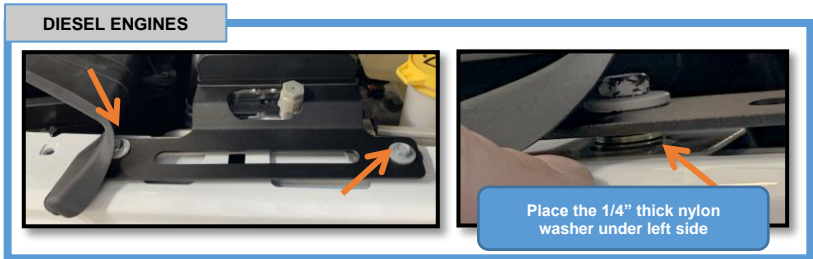
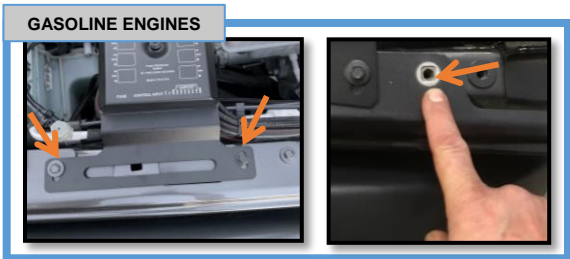


- Before installing onto the fender, run cable up through the slot from the bottom. Plug the cable into either port. Adjust the cable to ensure the cover will close properly.



Do this step before
Installing onto fender

- Align the bracket slots over the holes on fender. Reuse the 10mm bolts and tighten them down, leaving the far-right hole open.



- Snugly route power leads along firewall over to battery using supplied cable ties to secure.





- Connect the **Positive** cable to the battery auxiliary terminal stud and the **Negative** to the ground stud on inner fender. Use supplied cable ties to secure all cables.



Positive side – 10mm socket



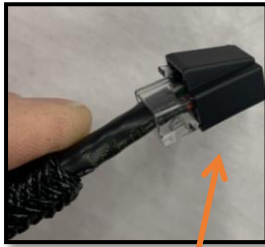
Negative side – 12mm socket

Use any of these ground studs on inner fender

- Using the T-40 TORX bit supplied by Jeep, remove the 4 windshield bolts that hold the windshield up (refer to owner's manual for bolt locations). Tilt the windshield forward about 20-30 degrees (have a friend hold it while feeding the cable in the next step).



T-40 TORX bit from the Jeep tool kit



Leave protective cover on



Pass cable through here

NOTE: Refer to the owner's manual for the 4 windshield bolt locations

- Next, pass the control cable through the cowl and up to the windshield threshold. Lay the cable flat and bring it out to where the location of the sPOD controller will be installed.

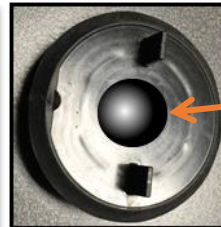
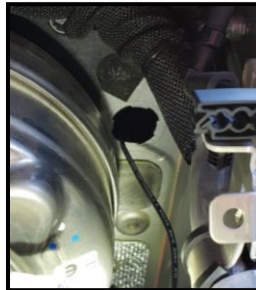


Tilt the windshield forward just enough to pass the cable down into the bottom of the windshield threshold



Bring cable up and leave enough cable to attach to the controller and then tilt windshield back up

- Alternative firewall access** on drivers side just to the lower right hand side of the brake booster, locate the removable firewall plug, turn it clockwise to release it out of the firewall.



Using a step drill, create a hole to fit the connector through

AFTER INSTALLATION, YOU MUST START THE ENGINE TO ACTIVATE THE SYSTEM!!